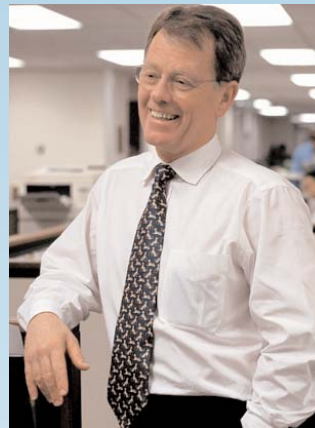


Probiquity

Accelerating productivity through business process analysis & management

Process management
solutions...



...for increasing
productivity and
profitability.

www.probiquity.com



Understand

Help People Understand Processes

Probiqurity's role-based methodology clearly depicts the organizational aspects of a business process. With the RoleFlow™ business process design tool, analyst time is reduced, and the resulting process descriptions are precise and intuitive to business users.

Automate

Automate Processes Quickly and Efficiently

Probiqurity's RoleManager™ process management engine creates automated business processes directly with diagrams created in the RoleFlow process design tool. RoleManager's J2EE-compliant architecture integrates into existing web service and application infrastructure. Participants in the automated process do not require any software other than a current generation web browser and e-mail.

Manage

Keep on Top of Change

Business process automation with RoleManager can be modified by changing the process diagrams with the RoleFlow design tool. Multiple processes can be executed and controlled simultaneously.

Monitor

Understand and Control

Once a process is automated, monitor it in real-time with the RoleMonitor™ system process console and reporting tool. All activities and events within a process are stored within an SQL-compliant database.

Note: RoleFlow™, RoleMonitor™ and RoleManager™ are trademarks of Probiqurity LLC.

The Challenge:

Increasing efficiency, productivity and profitability without rebuilding.

The challenge facing organizations is to increase the efficiency, productivity and profitability of business processes without acquiring a costly technology "cathedral."

Technology solutions for process improvement are often very costly, difficult to implement, and partially integrated at best.

Another challenge is to deploy technology for process improvement in an incremental fashion without disrupting enterprise operations.

Success in process improvement projects is often very difficult due to the "understanding gap" between the business process participants and the technical person seeking to design and build supporting automation systems.

The technological solution to managing business processes must also include the power to monitor, analyse and control business activity for optimum effectiveness and success.



The Probiqurity Solution:

Process glue for systems and people.



The Probiqurity product suite meets these challenges for process improvement by providing "process glue" for systems and people. It is a component in your enterprise architecture, not necessarily a replacement for existing technology and applications.

Processes are graphically modelled using an intuitive method understandable to business process owners and participants while also supporting the business rules and the underlying application automation. As process understanding evolves, reusable technical components can be developed in parallel and deployed incrementally.

www.probiqurity.com

Understand

Automate

Manage

Monitor

RoleFlow

Business process design tool

Product Features

- Drag and drop process designer
- Hierarchical decomposition
- Concurrency
- Iteration
- Exceptions / Events
- Detail, explorer and birds-eye views
- Extensible action, form and actor libraries
- Definable automation and data types
- Java 1.3 / Swing Application
- XML output file describes both graphic representations and automation components
- Integrates with IBM WebSphere™ application developer

RoleManager

Enterprise class business process management server

RoleManager is a component-oriented process management and application integration engine. The RoleManager process automation server is a configurable component for your existing enterprise infrastructure. It deploys horizontally across existing databases and applications using open APIs.

RoleManager is compliant to Java 2, Enterprise Edition standards, and supports certified J2EE applications servers, such as IBM WebSphere. On the server-side, RoleManager technology accepts RoleFlow's XML diagrams directly into an automation environment. RoleManager clients require only a web browser, though greater levels of application integration are supported.

Product Features

- Java 2 Enterprise Edition (J2EE) compliant architecture
- Component based APIs
- Runs on certified J2EE servers
- Supports industry standard protocols:
 - Enterprise Java Beans
 - POP3
 - HTTP[S]
 - SMTP
 - JMS / MQ Series
 - SQL
 - LDAP

RoleMonitor

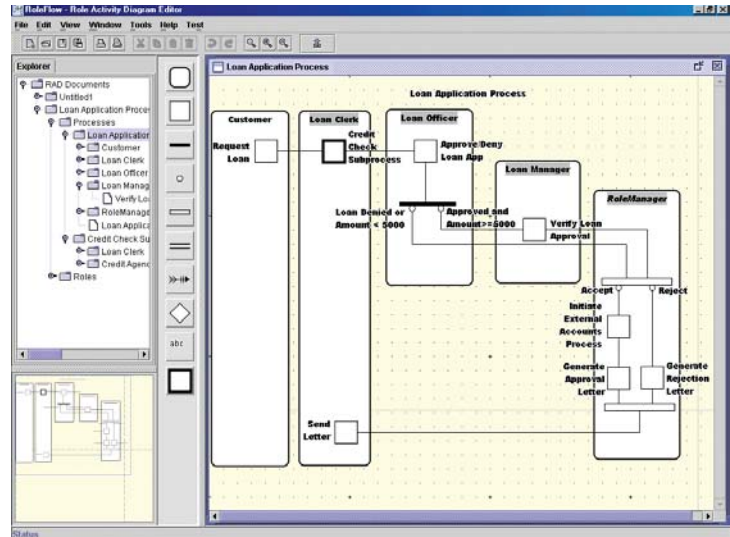
Real-time business process monitoring and reporting

RoleMonitor contains multiple interfaces to log and status information about processes. Processes may be launched and monitored utilizing both graphic and text web interfaces. Process status data may be exported for custom reporting requirements.

Understand

With RoleFlow, business processes are modeled using easy to understand role activity diagrams. Unlike conventional flow-charting, role activity diagrams preserve organizational context showing responsibilities and relationships in business processes.

Automate



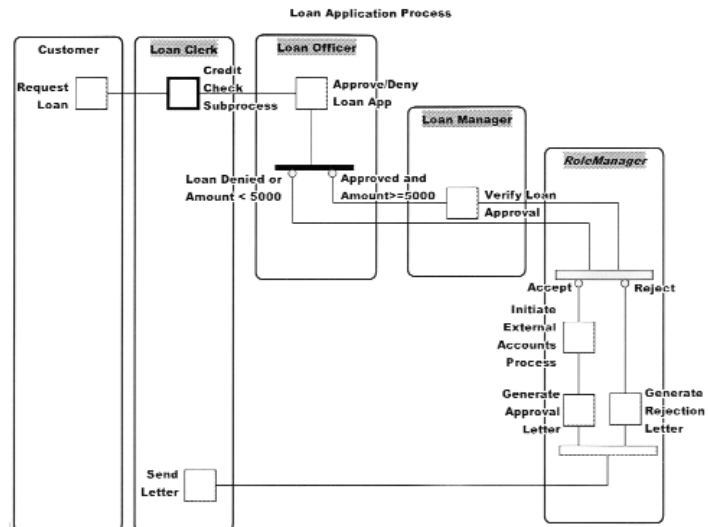
Diagrams created in RoleFlow are captured in an open XML format. Other applications can read and write to these XML data files for custom requirements.

For any given process, the same diagram also supports the underlying application automation. Individual actions in the process are linked to reusable components in the extensible Action Library.

Process monitoring actions may launch a web form, send an e-mail, launch a system function, read a database, or interact with Java Beans. Data on Web forms created in any HTML editor can be imported so that the form data can be used in the specification of process flow. Process monitoring can also be specified using RoleFlow diagrams. Logic can be attached to process roles so that the proper "Actor" can be assigned to a "Role."

Manage

Monitor



Probiquity Enterprise Benefits:

- Increased productivity
- Lower maintenance and development cost
- Real-time process management
- Enterprise integration

Increased productivity

- Understandable business process maps
- People and systems managed within one process

Lower maintenance and development cost

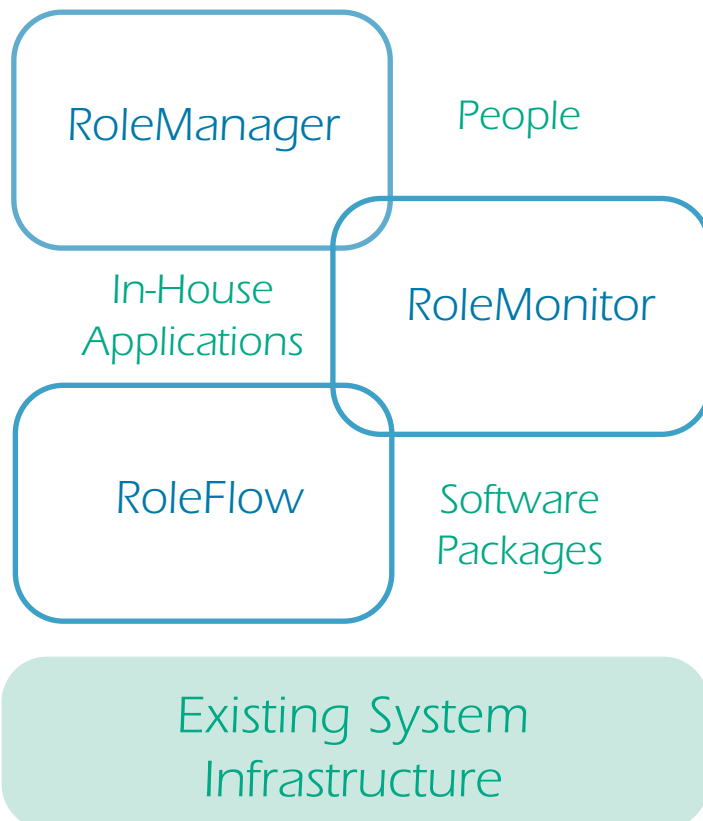
- Process owners and technologists working off the same page
- Business logic separated from programming logic

Real-time process management

- Status and event monitoring
- Process and work pattern analysis

Enterprise integration

- Adaptable interfaces to connect enterprise systems
- Manageable projects utilizing layered deployment



End-to-end solution

Probiquity offers a complete end-to-end solution for your business, from analysing and understanding the opportunities for process improvements to the delivery of a full business process management environment.

Facilitating understanding

Probiquity process management consultants use a team model. RoleFlow diagrams are used to facilitate and further the understanding necessary between the process owners, business and technologists to ensure a successful process management project.

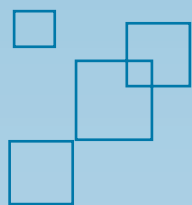
Incremental deployment

As process understanding evolves, reusable technical components can be deployed incrementally toward a more automated process environment.

Qualified partners

Probiquity and its qualified technology partners can perform all aspects of integrating Probiquity's component architecture with your existing technologies.

www.probiquity.com



Probiquity

Accelerating productivity through business process analysis & management



Where will you go tomorrow?

Probiquity is able to perform all aspects of integrating Probiquity's component architecture with your existing technologies.

Probiquity is able to offer unique partnership opportunities to businesses seeking to leverage advanced business process technology for competitive advantage.

To find out how Probiquity products and services can create significant improvements in your enterprise, please contact Probiquity at: **608.332.1085**, or send an e-mail asking for information to info@probiquity.com.



www.probiquity.com